



Why Kolinski and Crosby?

As one of our patients, you were probably referred here by your own Dentist or by friends who have had treatment in our office. As dental implants have become the norm for treatment of broken and/or missing teeth, an increasing number of implant procedures are being recommended. As a result, these procedures are being done by an increasingly diverse number of practitioners. We are writing to help you understand why you should feel confident in your Dentist or your friend's recommendation to have us do your implant surgery.

1) Our history – When we placed our first implant in 1986 we started on a journey to be the best we could be. We have dedicated our practice to be specialized in implant care from that time on and pride ourselves in both taking continuing education from other experts in the field as well as providing continuing education to our fellow professionals.

2) Dedication to quality – There is a difference in the ability of practicing professionals in delivering implant care. Advertisers like to present themselves as "experts" but we would prefer a trusted recommendation over a paid advertiser. Please review some of the cases shown on the attached page and observe the difference between just placing an implant and someone genuinely dedicated to getting it right.

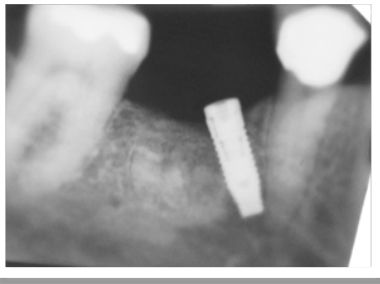
3) Experience – Our dedication to quality coupled with the experience we have gained from performing implant procedures everyday, enables us to deliver a consistent, predictable product with minimal trauma to our patients. Having placed over 15,000 implants we have seen almost every unusual situation that may arise and in the majority of these cases have had the ability to effectively resolve them as well. Many times, our diagnostic abilities, together with our radiographic and CT scan technology allow us to anticipate these circumstances prior to beginning any treatment. Also, unlike some advertisers, we have been in business for over 30 years and will continue to be in business as long as you need us. Many of the advertising companies stay in business, but either change their name and/or change the treating dentist. Our commitment to you, our patient, is to discuss your treatment with you as we see it. We do not promise unrealistic expectations because unexpected outcomes can and do exist, just as they do with any type of surgical procedure. Should a concern or problem arise, we will always be here for you.

4) Sensitivity to cost - Our primary goal is to be sure you get a quality product and service. On this we will not compromise. We are not the cheapest but we are not the most expensive either. We put our patient's interest first by doing the minimum amount of treatment necessary to get the job accomplished and do no more and no less than our patients need or want. We do business with reputable companies that have been in business for a long time, just like us. That way, we know we have someone to go back to if a problem arises. We always answer our phones in person, spend significant time on training of our personnel, we have up-to-date, modern technology, equipment and facility. We give our home and cell phone numbers out to our patients in case of emergency. We donate a lot of services to those less fortunate. We do not participate in any plans which involve forced discounting of fees and directives on how our patients should be treated. We are sensitive to the issue of cost for this treatment, but it does not impel us to cut quality so that we can say we are cheaper than someone else. We cannot provide this level of service when outside parties set our fees or tell us to do things we know are not in our patient's best interest.

We value the trust placed in our hands. We will continue to do our best to maintain that trust and you can count on us to continue to keep your interests at the forefront of everything we do. Please feel free to call us or visit our web site for any questions or comments.

Marty Kolinski, DDS and Tricia Crosby, DDS, MS

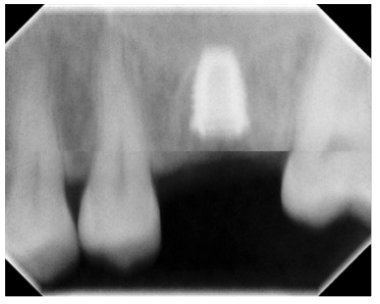




This individual came to see us with a dental implant placed at a severe angle. A crown was not able to be placed on this implant without breaking.



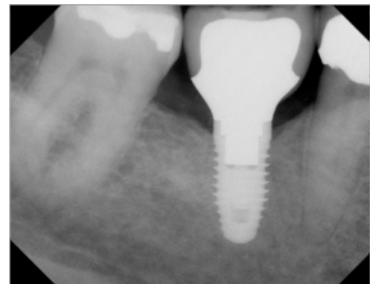
Note that the crown on this dental implant has a large overhang on the front. This overhang is a result of the implant being placed too far away from the neighboring tooth. This can lead to screw and porcelain fracture in the future.



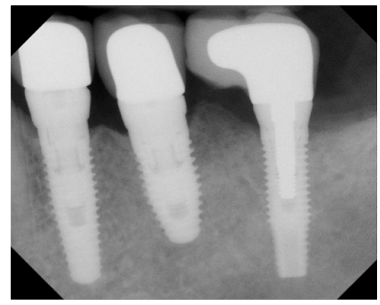
This implant was placed too far underneath the bone crest and was also too small in size to withstand chewing forces.



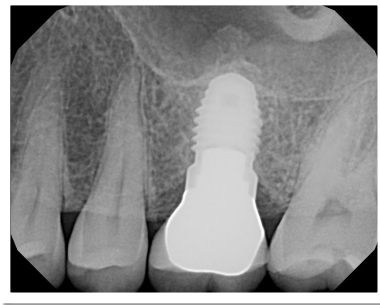
This is how we treat each and every one of our implant surgeries. We adhere to sterility and have an adequate numbers of assistants available at all times during procedures.



We removed the implant and placed another one in a good position. Note the implant is centrally positioned and parallel with the adjacent teeth.



This individual lost the 2 neighboring teeth. We removed the teeth and placed 2 additional implants the proper distance from each other.



This implant was removed and a proper sized implant was placed and a socket bone graft completed in the sinus. This is 4.5 years after the implant was placed.

Martin L. Kolinski, DDS
Tricia R. Crosby, DDS, MS
525 Tyler Road Suite E
St. Charles, IL 60174
630.377.4677

www.midwestdentalimplantology.com

